

# 200&300 SERIES

## multiport VALVES

HARD & SOFT SEAT



*NOSHOK Multiport Gauge Valves reduce the number of gauge and other instrument connections to permanent piping installations, therefore decreasing possible leak points (paths). Optional bleed plugs further allow pressure to be bled off without disturbing the permanent piping installation.*

### HARD SEAT VALVE FEATURES

- Metal to metal hard seat design is 100% Helium leak tested to  $1 \times 10^{-4}$  ml/s at 200 psi.
- 10000 psi pressure rating (@ 200°F maximum)

### SOFT SEAT VALVE FEATURES

- Soft seat design is 100% Helium leak tested to  $1 \times 10^{-4}$  ml/s at 200 psi.
- 6000 psi pressure rating (@ 200°F maximum)
- Replaceable Delrin seat.
- Straight through porting for bi-directional, high capacity flow and easy roddable cleaning.

### STANDARD FEATURES FOR HARD SEAT and SOFT SEAT VALVES

- Blow-out proof stem that provides a secondary stem seal in the full open position.
- Stem packing below the threads prevents thread galling and contamination.
- Viton® O-Ring & Teflon® back-up ring stem seals.
- All 316SS stems (even in steel valves) for longer life.
- Stem and bonnet threads are rolled for greater strength and smoother operation.
- One piece bonnet with a metal to metal seal to the valve body below the bonnet threads.
- Bonnet lock pin to prevent accidental loosening.
- Vinyl bonnet and stem dust cap.
- .187 inch orifice size.
- Optional panel mount bonnet and panel nuts.
- Electroless Nickel plated finish on carbon steel valves.
- Electropolish finish on stainless steel valves.

## Ordering Information

200 SERIES - HARD SEAT MULTI-PORT VALVES		
PART NUMBER	CONNECTION	MATERIAL
204 MFC	1/2 NPT Male-Female	Steel
20604 MFC	3/4 NPT Male- 1/2 NPT Female	Steel
204 MFS	1/2 NPT Male-Female	Stainless Steel
20604 MFS	3/4 NPT Male- 1/2 NPT Female	Stainless Steel

300 SERIES - SOFT SEAT MULTI-PORT VALVES		
PART NUMBER	CONNECTION	MATERIAL
304 MFC	1/2 NPT Male-Female	Steel
30604 MFC	3/4 NPT Male- 1/2 NPT Female	Steel
304 MFS	1/2 NPT Male-Female	Stainless Steel
30604 MFS	3/4 NPT Male- 1/2 NPT Female	Stainless Steel

NACE MRO175-99 CERTIFICATION (Consult Factory)

When ordering options please refer to the Part Number Construction guide below for the appropriate suffix. Please note that the standard O-Ring in all the **NOSHOK** Valves are Viton® and the standard handles are: "T" handles.

Part Number Construction: **304 MFC - PG - PM2 - EM1 - HL5**

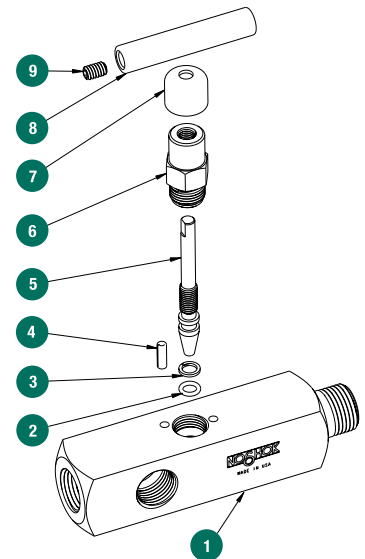
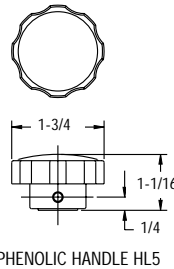
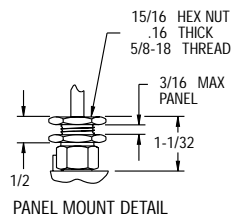
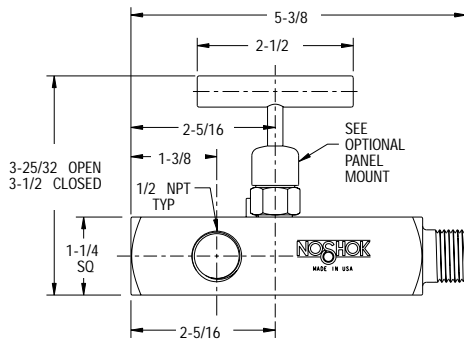
PG - 200/300 Series Plug, Steel  
 PG - 200/300 Series Plug, SS  
 BP - 200/300 Series Bleed Plug, Steel  
 BP - 200/300 Series Bleed Plug, SS  
 All Plugs can also be ordered separately

**Panel Mount Options**  
 PM1 - Panel Mount (1 nut)  
 PM2 - Panel Mount (2 nuts)

**O-Ring Options**  
 EM1 - EPDM 80  
 KZ1 - Kalrez® 3018

**Handle Options**  
 HL1 - Mini "T"  
 HL2 - "T"  
 HL3 - Round Knurled  
 HL4 - 1-3/8 Phenolic  
 HL5 - 1-3/4 Phenolic

## General Dimensions



- 1 Valve Body
- 2 Viton® O-Ring
- 3 Teflon® Back-up Rings
- 4 Bonnet Lock Pin
- 5 Valve Stem
- 6 Valve Bonnet
- 7 Dust Cap
- 8 Valve Handle
- 9 Set Screw

### Hard Seat Technical Data:

**Maximum Pressure Rating:** Orifice size: 0.187"  
 Steel: 10000 psi **Flow Coefficient:** 0.44  
 Stainless Steel: 10000 psi **Standard O-Ring:** Viton®  
**Standard Back-up Ring:** Teflon®

### Soft Seat Technical Data:

**Maximum Pressure Rating:** Orifice size: 0.187"  
 Steel: 6000 psi **Flow Coefficient:** 0.64  
 Stainless Steel: 6000 psi **Standard O-Ring:** Viton®  
**Standard Back-up Ring:** Teflon®

For flow characteristics refer to page 14

Kalrez® and Viton® are registered trademarks of DuPont Dow Elastomers  
 Teflon® is a registered trademark of the DuPont Company