

2000SERIES

Manifold Valves



The NOSHOK 2000 Series Hard Seat and Soft Seat 2 Valve Manifolds are designed for use with differential pressure transmitters in liquid level applications. The NOSHOK 2000 Series 2 Valve Manifolds are also available in either a single flange or double flange connection for direct installation.

All manifold bodies are machined from cold drawn* extrusions allowing NOSHOK to hold tighter tolerances and greater mechanical strength than any other manifold valve in the industry. Stem and bonnet threads are rolled for greater strength and ease of operation. The valve stems are equipped with both a Viton® o-ring and Teflon® back-up ring below the threads to protect from corrosion and galling. Each and every manifold valve is 100% Helium leak tested to 1×10^{-4} ml/s at 200 psi for a bubble tight seal.

*Uniform shape, smooth clean surface finish, straightness

2000 SERIES MANIFOLD VALVE STANDARD FEATURES

- One piece bonnet with a metal to metal seal to the valve body below the bonnet threads
- Bonnet lock pin to prevent accidental loosening
- Vinyl bonnet and stem dust cap
- 0.187 inch orifice size
- Electroless Nickel plated finish on carbon steel manifold valves
- Electropolish finish on stainless steel manifold valves
- Electroless Nickel plated high tensile strength 4140 steel mounting bolts

HARD SEAT MANIFOLD VALVE FEATURES

- Helium leak tested metal to metal hard seat design
- 10000 psi pressure rating @ 200 degrees Fahrenheit maximum
- Flow coefficient factor of 0.44

SOFT SEAT MANIFOLD VALVE FEATURES

- Helium leak tested soft seat design with replaceable Delrin seat
- 6000 psi pressure rating @ 200 degrees Fahrenheit maximum
- Straight through porting for bi-directional flow and easy roddable cleaning
- Flow coefficient factor of 0.76

Ordering Information

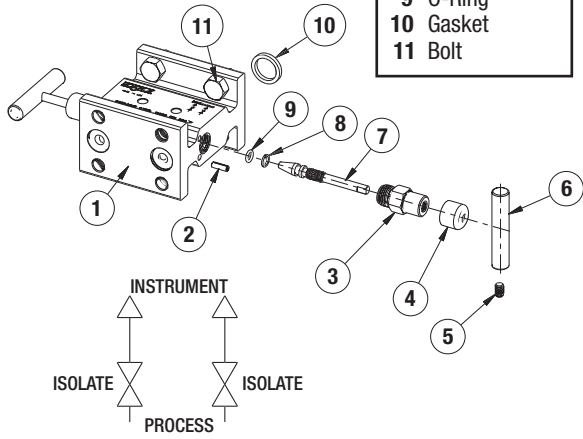
PART NUMBER	CONNECTION	MATERIAL
2020-MFC	Flange - 1/2" NPT	Steel
2020-MFS	Flange - 1/2" NPT	Stainless Steel
2020-MMC	Flange - Flange	Steel
2020-MMS	Flange - Flange	Stainless Steel

PART NUMBER	CONNECTION	MATERIAL
2120-MFC	Flange - 1/2" NPT	Steel
2120-MFS	Flange - 1/2" NPT	Stainless Steel
2120-MMC	Flange - Flange	Steel
2120-MMS	Flange - Flange	Stainless Steel

Viton® is a registered trademark of DuPont Dow Elastomers
Teflon® is a registered trademark of DuPont Company

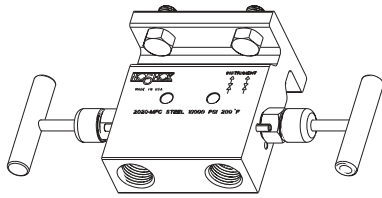
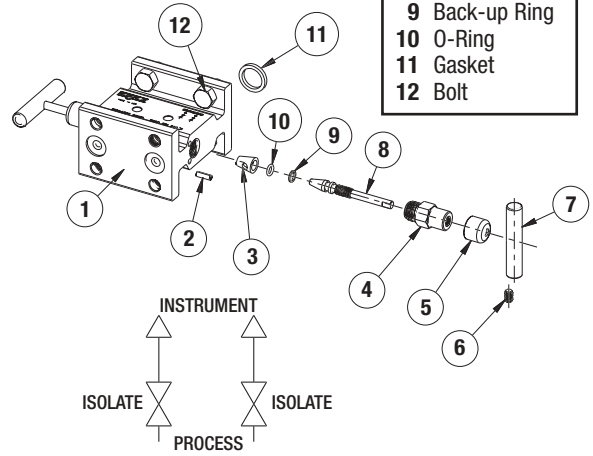
2000 series hard seat

- 1 Body
- 2 Spring Pin
- 3 Bonnet
- 4 Black Dust Cap
- 5 Set Screw
- 6 Handle
- 7 Stem
- 8 Back-up Ring
- 9 O-Ring
- 10 Gasket
- 11 Bolt

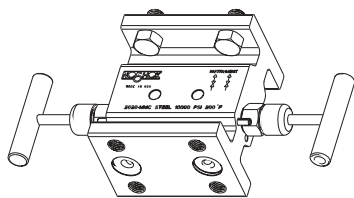
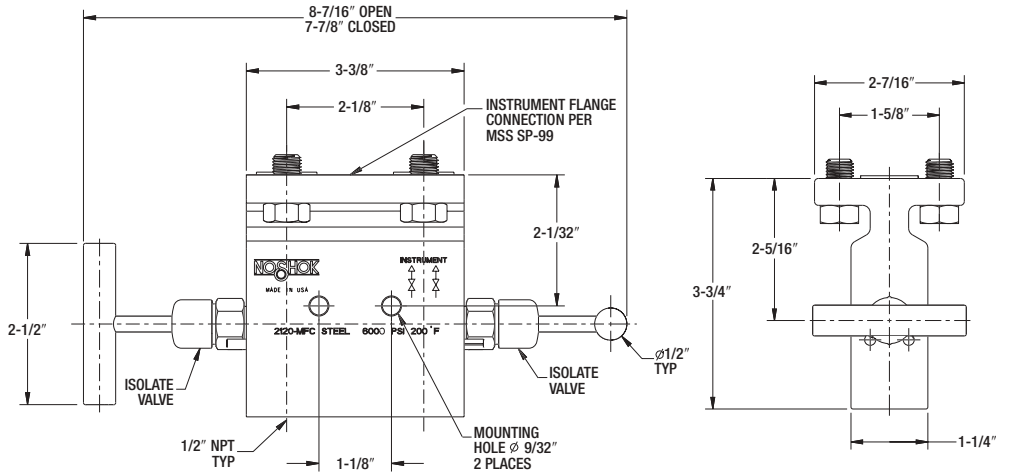


2100 series soft seat

- 1 Body
- 2 Spring Pin
- 3 Soft Seat
- 4 Bonnet
- 5 Black Dust Cap
- 6 Set Screw
- 7 Handle
- 8 Stem
- 9 Back-up Ring
- 10 O-Ring
- 11 Gasket
- 12 Bolt



FLANGE-FEMALE



FLANGE-FLANGE

