

600&700 SERIES

block & bleed VALVES

HARD & SOFT SEAT



NOSHOK Block & Bleed Valves allow pressure to be bled off without disturbing the permanent piping installation thereby enabling the user to quickly and easily remove and/or replace instruments.

HARD SEAT VALVE FEATURES

- Metal to metal hard seat design is 100% Helium leak tested to 1×10^{-4} ml/s at 200 psi.
- 10,000 psi pressure rating (@ 200°F maximum)

SOFT SEAT VALVE FEATURES

- Soft seat design is 100% Helium leak tested to 1×10^{-4} ml/s at 200 psi.
- 6,000 psi pressure rating (@ 200°F maximum)
- Replaceable Delrin seat.
- Straight through porting for bi-directional, high capacity flow and easy roddable cleaning.

STANDARD FEATURES FOR HARD SEAT and SOFT SEAT VALVES

- Blow-out proof stem that provides a secondary stem seal in the full open position.
- Stem packing below the threads prevents thread galling and contamination.
- Viton® O-Ring & Teflon® back-up ring stem seals.
- All 316SS stems (even in steel valves) for longer life.
- Stem and bonnet threads are rolled for greater strength and smoother operation.
- One piece bonnet with a metal to metal seal to the valve body below the bonnet threads.
- Bonnet lock pin to prevent accidental loosening.
- Vinyl bonnet and stem dust cap.
- .187 inch orifice size.
- Optional panel mount bonnet and panel nuts.
- Electroless Nickel plated finish on carbon steel valves.
- Electropolish finish on stainless steel valves.

Ordering Information

600 SERIES - HARD SEAT BLOCK & BLEED VALVES

PART NUMBER	CONNECTION	MATERIAL
602 MFC	1/4 NPT Male-Female	Steel
604 MFC	1/2 NPT Male-Female	Steel
602 MFS	1/4 NPT Male-Female	Stainless Steel
604 MFS	1/2 NPT Male-Female	Stainless Steel
602 FFC	1/4 NPT Female-Female	Steel
604 FFC	1/2 NPT Female-Female	Steel
602 FFS	1/4 NPT Female-Female	Stainless Steel
604 FFS	1/2 NPT Female-Female	Stainless Steel

700 SERIES - SOFT SEAT BLOCK & BLEED VALVES

PART NUMBER	CONNECTION	MATERIAL
702 MFC	1/4 NPT Male-Female	Steel
704 MFC	1/2 NPT Male-Female	Steel
702 MFS	1/4 NPT Male-Female	Stainless Steel
704 MFS	1/2 NPT Male-Female	Stainless Steel
702 FFC	1/4 NPT Female-Female	Steel
704 FFC	1/2 NPT Female-Female	Steel
702 FFS	1/4 NPT Female-Female	Stainless Steel
704 FFS	1/2 NPT Female-Female	Stainless Steel

NACE MRO175-99 CERTIFICATION (Consult Factory)

When ordering options please refer to the Part Number Construction guide below for the appropriate suffix. Please note that the standard O-Ring in all the **NOSHOK** Valves are Viton® and the standard handles are: "T" handles.

Part Number Construction: **702 FFC - PM2 - EM1 - HL5**

Panel Mount Options

PM1 - Panel Mount (1 nut)
PM2 - Panel Mount (2 nuts)

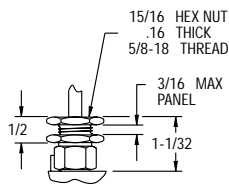
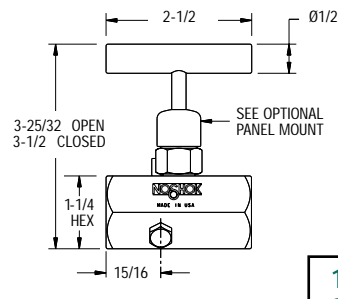
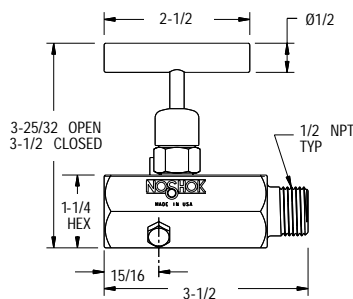
O-Ring Options

EM1 - EPDM 80
KZ1 - Kalrez® 3018

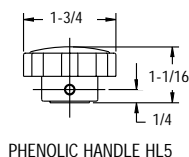
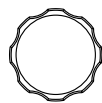
Handle Options

HL1 - Mini "T"
HL2 - "T"
HL3 - Round Knurled
HL4 - 1-3/8 Phenolic
HL5 - 1-3/4 Phenolic

General Dimensions

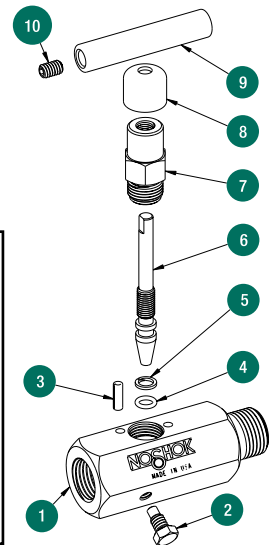


PANEL MOUNT DETAIL



PHENOLIC HANDLE HL5

- 1 Valve Body
- 2 Bleed Screw
- 3 Bonnet Lock Pin
- 4 Viton® O-Ring
- 5 Teflon® Back-up Ring
- 6 Valve Stem
- 7 Valve Bonnet
- 8 Dust Cap
- 9 Valve "T" Handle
- 10 Handle Set Screw



Hard Seat Technical Data:

Maximum Pressure Rating:	Orifice size:	0.187"
Steel: 10000 psi	Flow Coefficient:	0.44
Stainless Steel: 10000 psi	Standard O-Ring:	Viton®
	Standard Back-up Ring:	Teflon®

Soft Seat Technical Data:

Maximum Pressure Rating:	Orifice size:	0.187"
Steel: 6000 psi	Flow Coefficient:	0.76
Stainless Steel: 6000 psi	Standard O-Ring:	Viton®
	Standard Back-up Ring:	Teflon®

For flow characteristics refer to page 14

Kalrez® and Viton® are registered trademarks of DuPont Dow Elastomers
Teflon® is a registered trademark of the DuPont Company